



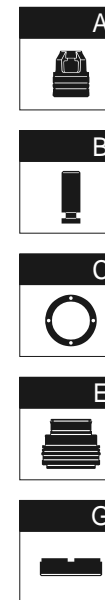
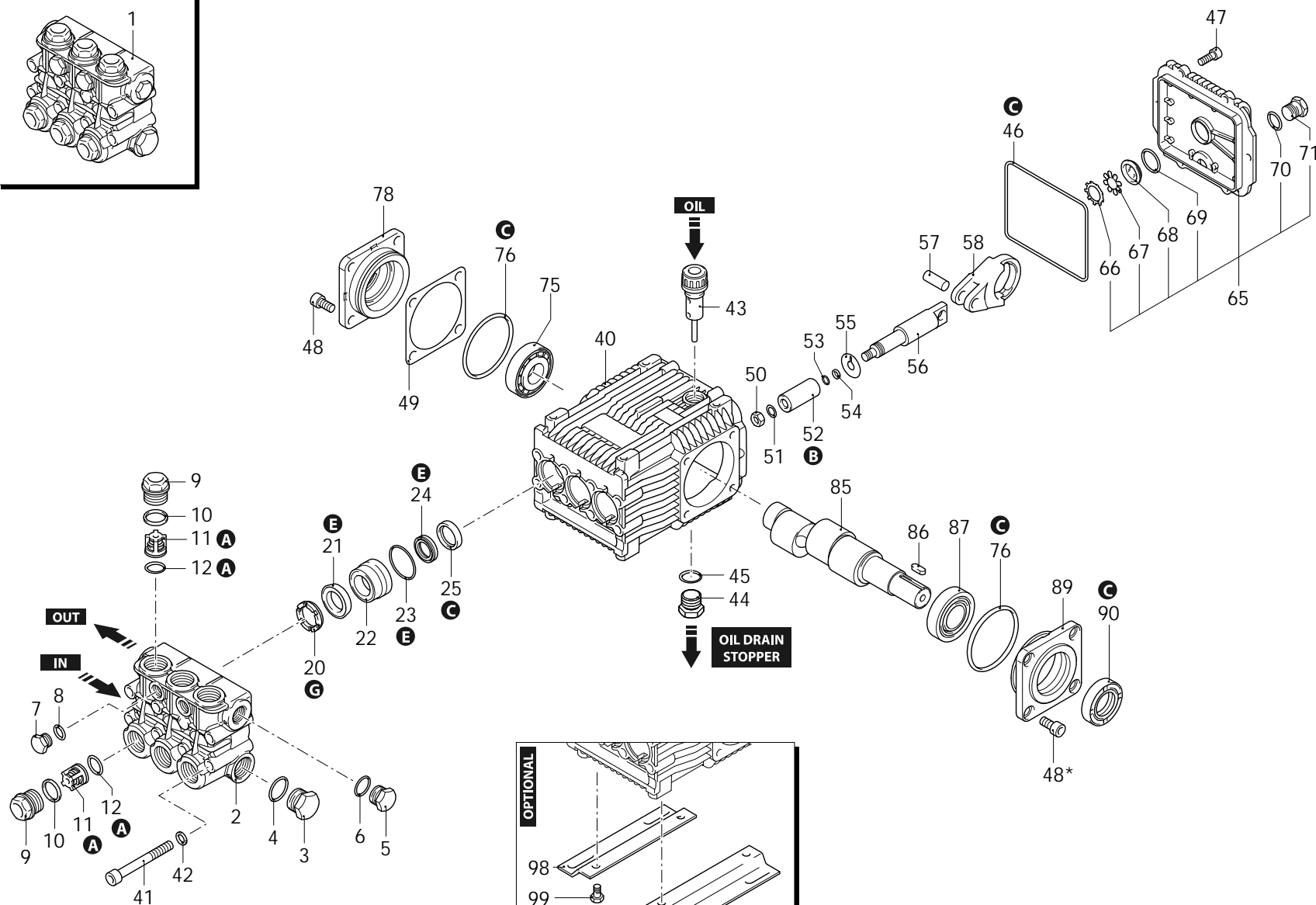
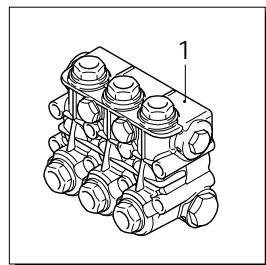
Series 228

RK

N

1450rpm

ø 24mm



AR_s228-02_v01

29/09/2023



Series 228

RK

N

1450rpm

ø 24mm

P	Code	Description	Q	Note	Validity
1	1389270	Head assembly	Ø 18	1	
2	1381071	Head	brass	1	
3	820361	Plug	1/2" G brass	1 C=40Nm	
4	180101	O-ring	Ø 17,5x2	1 Lubricate with grease Molykote PG54	
5	1980740	Plug	3/8" G brass	1 C=20Nm	
6	740290	O-ring	Ø 14x1,78	1 Lubricate with grease Molykote PG54	
7	880581	Plug	1/4" G brass	1 Screw with Loxeal 55-14 / C=15Nm	
8	820510	O-ring	Ø 10,82x1,78	1	
9	960090	Plug	brass	6 Screw with Loxeal 55-14 / C=54Nm	
10	960160	O-ring	Ø 17,86x2,62	6 Lubricate with grease Molykote PG54	
11	1389051	Complete valve		6	
12	880830	O-ring	Ø 15,54x2,62	6	
20	960110	Ring	support Ø 18	3	
21	1382740	Water seal	Ø 18	3 Lubricate with grease Molykote PG54	
22	1380090	Piston guide	Ø 18	3	
23	961240	O-ring	Ø 31,47x1,78	3	
24	880330	Water seal	Ø 18	3	
25	880520	Ring	seal	3	
40	1382770	Pump body		1	
41	820150	Screw	TCEI M8x70	8 C=25Nm	
42	1381850	Washer		8	
43	880130	Oil plug	with oil dipstick	1	
44	1980740	Plug	3/8" G brass	1 C=20Nm	
45	740290	O-ring	Ø 14x1,78	1 Lubricate with grease Molykote PG54	
46	1780510	O-ring	Ø 106x3	1	
47	1343510	Screw	TCEI M6x14	6 C=10Nm	
48	850370	Screw	TCEI M8x16	4 C=24,5Nm	
48*	850370	Screw	TCEI M8x16	4 C=24,5Nm	
49	1380120	Shim 0.10mm		1	
49	1380130	Shim 0.19mm		1	
49	1380530	Shim 0.25mm		1	
50	962010	Nut		3	
51	962000	Washer		3 Screw with Loxeal 55-14 / C=20Nm	
52	1380940	Piston	Ø 18	3	
53	600180	O-ring	Ø 7,66x1,78	3	
54	1080401	Ring	anti-extrusion	3	
55	1380950	Plate		3	
56	1380920	Piston	guide	3	

P	Code	Description	Q	Note	Validity
57	1380060	Pin		3	
58	1383050	Connecting-rod	aluminium	3	
65	1789010	Cover	complete	1	
66	1260430	Ring		1	
67	1780690	Plate		1	
68	1260250	Level gauge		1	
69	1140450	O-ring	Ø 20,24x2,62	1 Lubricate with grease Molykote PG54	
70	740290	O-ring	Ø 14x1,78	1 Lubricate with grease Molykote PG54	
71	1980740	Plug	3/8" G brass	1 C=20Nm	
75	2280340	Bearing		1	
76	640030	O-ring	Ø 59,99x2,62	2	
78	1380050	Support	open bearing	1	
85	2280070	Shaft	2 marked	1	
86	1380520	Key		1	
87	1383140	Bearing		1	
89	1380040	Support	open bearing	1	
90	2282260	Ring	seal	1 Assemble with tool [2281010]	
98	1380141	Foot		2 C=20Nm	
99	1263130	Screw	TE M8x12	4 C=20Nm	
A	2864	Valve kit		1	
B	2757	Piston kit	Ø 18	1	
C	1855	Oil seal kit		1	
E	1857	Water seal kit	Ø 18	1	
E	2809	Water seal kit	Ø 18 Viton	1	
G	1829	Support ring kit	Ø 18	1	

Revision: 1

Oil type: SAE 15W40

Attachment:

Date: 29/09/2023

Oil quantity: 0,435 Kg

*C= Tightening torque (Tolerance +0 ÷ -10%)*** = Not present for electric pump*